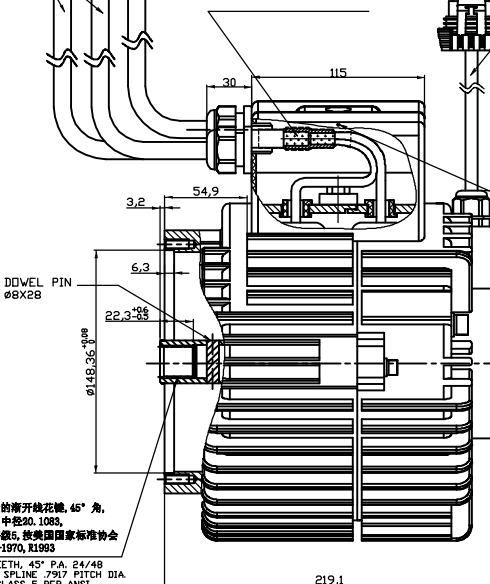


3-Ø8.2

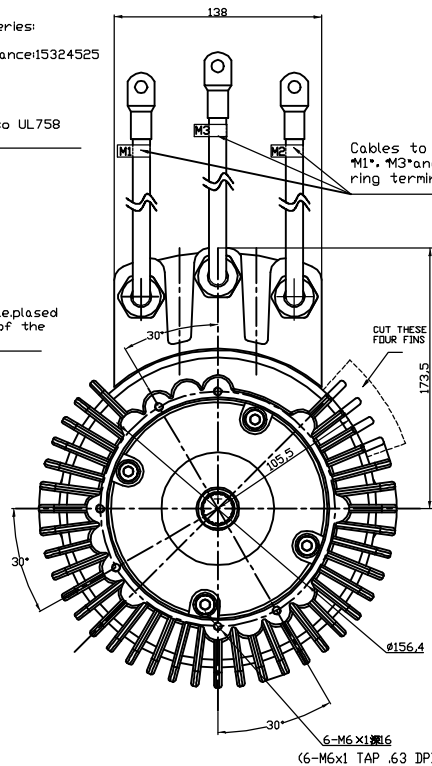
2AWG(35±15mm<sup>2</sup>) L=640±10mm  
Form the center of the terminal hole to the center of the other terminal hole.  
Cable type CCC245 IECB1(YH)  
GB 5013.6-1997

1.Strip the cable shoe end of the isolated wire.  
2.Put on heat shrink tube.  
3.Crimp the butt slice onto the 2 phase leads from 2 stators using the Die on the crimping tool.  
4.Full test:200% Duration:1 minute.

8 pin Metri-pack 150 series  
Connector:12047937  
Terminal Position Assurance:15324525  
Terminal:12084200  
Cable Seal:15324973  
Seal:12059168-B  
For pinout,see table 1  
Cable type according to UL758



19个齿的南开线花键, 45°角, 24/48, 中径20, 108S, 公差等级5, 按美国国家标准协会 图. 91-1970, R1995  
(19 TEETH, 45° PA, 24/48 PITCH SPLINE .7917 PITCH DIA. TEL. CLASS 5 PER ANSI 99C1-1970, R1995)



NOTES:

- OCW(from shaft)
- TURNS IS 18 PER PHASE
- The test voltage of motor is 50V
- Front bearing: NTN608 LLLUC3/SK (Made In Japan)
- USE RLS(www.rls.it) ENCODER sine/cosine encoder:RMB28AC0181 magnetic actuator:RMH08A3AD2
- Product to be shipped in plain white box, styrofoam packaging Include Dymo Plot in box.
- Box to be marked: Part Number: ME1401 REV-E Made In China
- Magnet:180°C
- Sensor Timing:with BEMF oscilloscope probe attached to M1 and ground probe attached to M2,the BEMF rising edge zero cross should lead the sine wave(sensor pin A to sensor pin C) and zero cross by 20 electrical degrees of the BEMF waveform.Alternatively if timing the sensor using a Servo controller,the encoder position should be within ±3 degrees of 0.
- Motor Phase Resistance is 0.0025Ω
- Motor inductance at 1000Hz is 0.045mH
- The sensor voltages needs to be 4 .2volt maximum,1.2 volt minimum,with a 1.7 to 2.4 volt Peak to Peak value.Power supply set to 5.00±0.01V as read by oscilloscope.
- Class H insulation system.
- Zip tie to be installed on sensor wire inside sensor cavity providing strain relief and to prevent heat shrink from off exposing shield wires
- Silicone glue silicone rubber 704 is to be applied surrounding the sensor chip filling the space in the disk up to the surface of the chip on the sensor ensuring all chip connections are completely submerged. No glue on the connector side of the board.Add silicone around the sensor cable hole through the casting.
- Glue applied with good coverage around the sensor cable hole.
- Temperature Sensor to be placed in one stator slot.
- Circuit board mating connector:Original Molex connector p/n 0430260800,Molex goldplated terminals p/n 043030006 and connector to be filled with nygeloc.
- Encoder voltage adjustments done at room temperature 20°C±10°C
- Do not ground shield on the circuit board side of the connector.
- Stator details: Slot width of 6mm. Slot depth of 46mm. stator length (L) 80mm. steel 35W210.
- Use barrel connectors with heat shrink for the temperature sensor wires splice internal to the motor.
- Enclosure protection IP54.
- Barrel crimps between motor phase leads and motor cables including heat shrink tube to be used.
- Ke=0.0172±5% at stator temp 20-30 deg C
- Motor rated at 4kw at 4700rpm at 50v according to CEI/EC 60034-1

NAMECARD DATA  
ME1401 REV-E  
DATE CODE XXXXXX  
SERIAL #:XX.XX.XXXX  
PAXSTER AS  
4KW 35VAC 310HZ

Table 1 sine/cosine encoder

PIN LOCATION 插孔点	WIRE DESIGNATION 导线标识	WIRE COLOR 导线颜色	NOTES 备注
A	Sine (正弦)	WHITE	正弦波
B	Cosine (余弦)	WHITE	余弦波
C	Ground (0)	BLACK	
D	N/C		
E	Vs (+5V)	RED	
F	Shield (保护)	GREEN	See note 20
G	Temp1	WHITE	
H	Temp2	WHITE	

REV	CHANGES	BY	ECO NO.	DATE	DO NOT SCALE THIS DRAWING IS PROPRIETARY PROPERTY OF MOTENERGY INC CORPORATION DISCLOSED IN CONFIDENCE WHICH MAY NOT BE USED OR DISCLOSED WITHOUT PERMISSION RETURN PROMPTLY AFTER USE.	DIMENSIONING AND TOLERANCING PER ANSI Y14.5M-1994	MATERIAL	TITLE	DESIGN VENDOR
A	Changed to RLS encoder,restricted use of silicone,gold plated Molex microfit crimps,shield not connected at encoder PCB	-	-	-				OUTLINE	Motenergy, Inc Slinger, WI, USA
B	Changed to stator quality 35W210,New motor cable cover,Fixed motor cables with barrel crimp,motor rotation corrected,Notes updated,Temperature Sensor wire installation,3 mounting bosses added to motor case.	-	-	-				DRAWN: bsp 16.09.23	
C	Rated 4kw,orange power cables,changed power length and drain hole in cover.	-	-	-				APPR:	
D	Crimp the butt slice onto the 2 phase leads from 2 stators	-	-	-				DEPT:	
E	Change LOYDS INDUSTRI to PAXSTER	-	-	-				SCALE:	