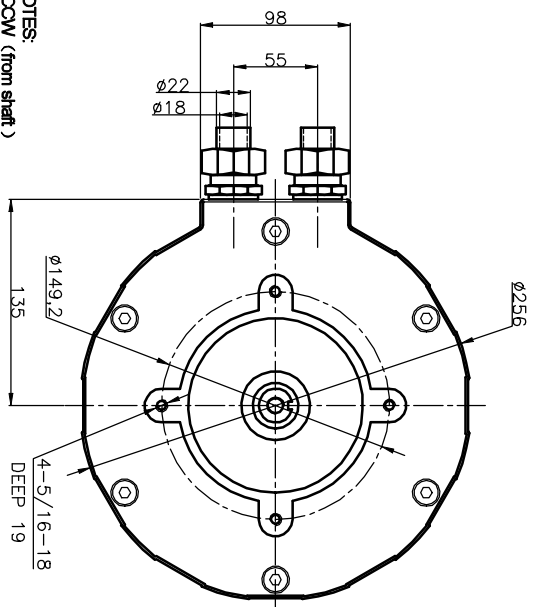
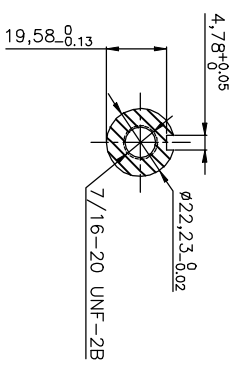


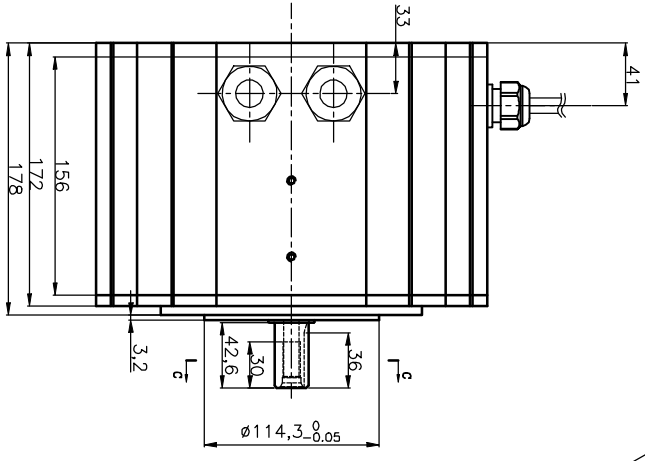
QTM 383 289 THE SIZES INDICATED ARE METRIC SIZES(mm).

图中所标尺寸为未制尺寸。

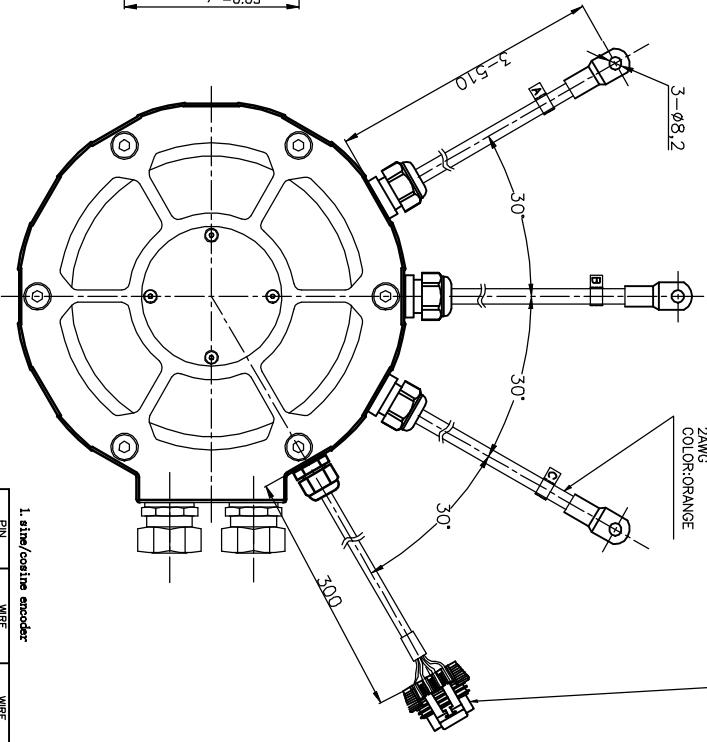
C-C
2:1



- NOTES:
- 1.CCW (from shaft)
 - 2.TURNS IS 12 PER PHASE
 - 3.Motor Phase Resistance is 0.0027Ω
 - 4.Motor Inductance at 1000Hz is mH
 - 5.Sensor magnet is to be 2.5mm to 3mm from the sensor mounting face. The minimum amplitude for the sensor is 2 volts AC,peak to peak
 - 6.Class H insulation system.



NAMECARD DATA
PART # ME1616
DATE CODE XXXXXX
SERIAL #:XX:XX:XXXX
Motenergy,Inc.
Wisconsin, USA



8 pin Metri-pack 150 series:
Connector:1204/937
Terminal Position Assurance:15324525
Terminal:12084200
Cable Seal:15324973
Seal:12039108-B

1. wire/coil/wire encoder

FIN LOCATION	WIRE DESIGNATION	WIRE COLOR
A	Coil (余弦)	WHITE
B	Sine (正弦)	BLUE
C	Ground (0)	BLACK
D	N/C	
E	V _{cc} (+5V)	RED
F	SIGNAL (脉冲)	GREEN
G	Terminal	YELLOW (-) 黄
H	Terminal	YELLOW (+) 黄

REV.	CHANGES	BY	REQD. NO.	DATE	DO NOT SCALE	DIMENSIONING AND CLASSIFICATION OF CHANGES	MATERIAL	TITLE
1					DO NOT SCALE	ANSI Y14.5M-1983		本款式无线增量式电动机
2					DO NOT SCALE	ANSI Y14.5M-1983		外形图
3					DO NOT SCALE	ANSI Y14.5M-1983		
4					DO NOT SCALE	ANSI Y14.5M-1983		

DESIGN	QTM 383 289
APPR.	
DEPT.	
SCALE	